

TITANTAG™ Tag

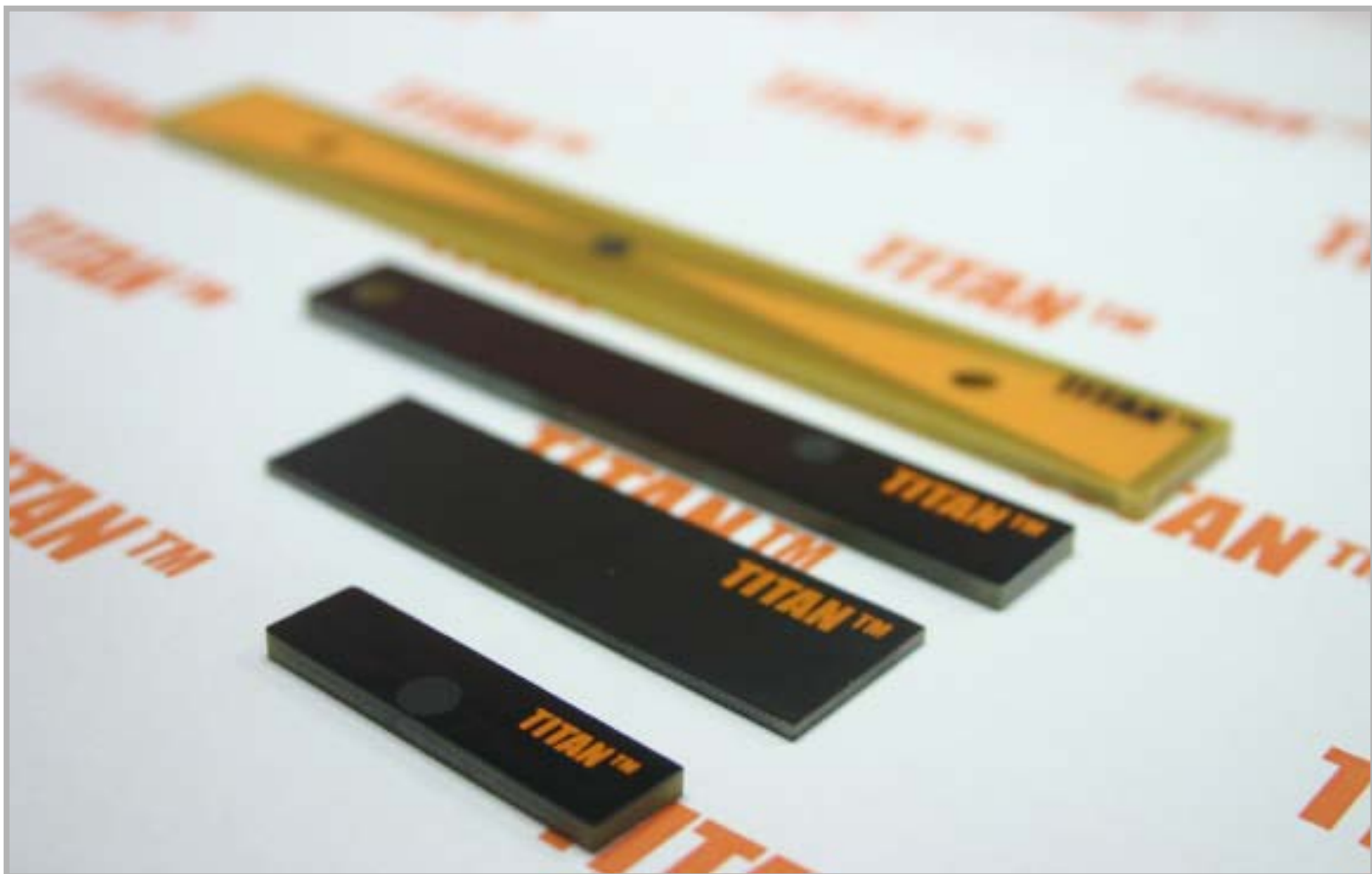
Heat resistant on-metal Tag for UHF

「These products only include RFCAMP internally and independently developed ones without any patent infringement issues worldwide.」

Read performance for each tag in following pages shall be different from that in real environment, based upon tag angles, referred RFID readers, materials where tags are applied or real RF environment.

- Reference fixed reader: ALR9800 with 9610 LP antenna made by Alien Technology, US
- Reference handheld reader: V. 2008, Samsung TECHWIN

- ▶ 100% Complies to RoHS
- ▶ Passed heat endurance test at 200°C (392 °F) for 6 hours
- ▶ Passed 200°C hot oil chamber test for 6 hours
- ▶ Passed 85°C/85% RH humidity test for 168 hours
- ▶ Passed free falling 1kg iron ball impact test from 1.5M height
- ▶ Passed ingress test (IP68)
- ▶ EPC Class1 Gen2 with ALIEN Higgs3
- ▶ Best read perform with similar size on-metal tags
- ▶ Encoding and barcode marking service provided



SMALLEST

Frequency

- UHF (US)
- UHF (EU)
- UHF (JPN)
- UHF (China)
- HF (13.56MHz)
- 2.45GHz

Protocol

- EPC C1G2 – Passive
- EPC C1G2 – BAP[*]
- ISO18000-6-B
- ISO14443
- ISO15693
- Active



L(mm)*H(mm)*T(mm)

38/39

10

3.2

Form factor

- Dry Inlay
- Wet Inlay
- Label
- Card PVC
- Card PET G
- Card RW
- On-metal tag (Gen.)
- On-metal tag (Encased)
- On-metal tag (FR4)
- Case ABS
- Case Polycarbonate
- Case Acryl
- Token

Chip Spec

- IMPINJ MONZA 1
- IMPINJ MONZA3
- ALIEN HIGGS 2
- ALIEN HIGGS 3
- ST MICRO GEN2
- NXP EPC1.19
- NXP UCODE GEN2
- NXP GEN2 XL
- NXP GEN2 XM
- TI GEN2 Strauss
- MIFARE 1K STD
- MIRARE Ultra-light
- ICODE UID
- ICODE SL2
- TI Tag it

Memory

bits

TID

96

EPC

96~496

User

512~64

Access

32

Kill

32

Read (Higgs3)

Fixed reader (ERP 4W)

Handheld reader (ERP 2W)

Type

Off-metal

On-metal

Off-metal

On-metal

Min. range

0.4m

2.0m

0.1m

0.8m

Max. range

0.6m

2.5m

0.2m

1.2m

Reliability

Ingression

IP68

Temperature

200°C, 6 hrs

Boiling oil

@200 °C, 6 hrs

85°C/85%

168 hrs

Pressure

15 bar

Guarantee

3 years

References

Clients

Year

Applications

References	Clients	Year	Applications
1	ASE Korea	2008 ~	PCB Assembly line – magazines and trays application
2	Samsung Data Center	2008 ~	IT asset management
3	Spirit Aero Systems (US, Boeing Company)	2008 ~	WIP – Metal plating process
4	Korea Alcohol Industrial	2009 ~	Tracking metallic bottles and containers
5	European toy maker (Not to be disclosed)	2009 ~	Tracking injection molding tools